



Application

- Can be used to transfer clean water or other liquids similar to water in physical and chemical properties
- Suitable for industrial use and urban water supply, pressure boosting for high buildings and fire fighting, garden irrigation, long-distance water transfer, heating ventilation and air controlling, circulation and pressure boosting for cold and hot water, and supporting equipment etc.

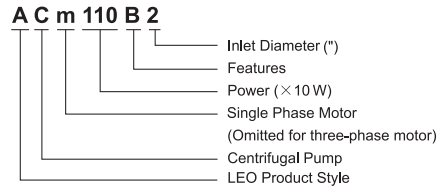
Pump

- Cast iron pump body and support under special anti-rust treatment
- AISI 304 shaft
- Max. liquid temperature: +40°C
- Max. suction: +8 m

Motor

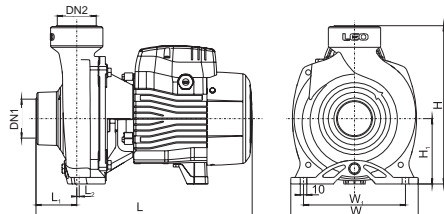
- C&U bearing
- Motor with copper winding
- Built-in thermal protector for single phase motor
- Insulation class: F
- Protection class: IPX4
- Max. ambient temperature: +40°C

Identification Codes



Technical Data

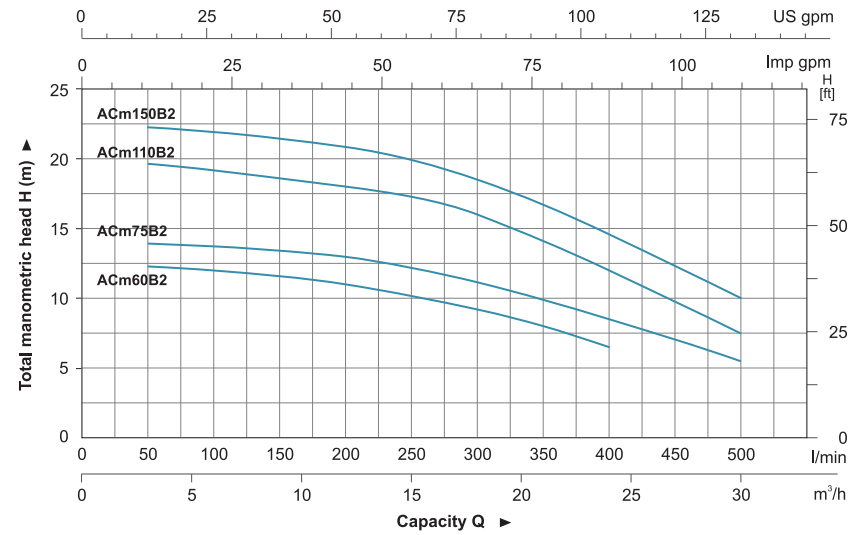
MODEL		POWER		Q (m³/h)		0	6	9	12	15	18	21	24	30
Single Phase	Three Phase	kW	HP	Q (l/min)	H (m)	0	100	150	200	250	300	350	400	500
ACm60B2	AC60B2	0,6	0,8			12,5	12	11,7	11	10,2	9,2	8	6,5	-
ACm75B2	AC75B2	0,75	1			14	13,7	13,5	13	12,3	11,2	9,9	8,5	5,5
ACm110B2	AC110B2	1,1	1,5			19,5	19,2	19	18,5	17,7	16,5	15	13	8,5
ACm150B2	AC150B2	1,5	2			22	21,5	21	20,5	19,5	18,3	16,5	14,5	9,5



Dimension

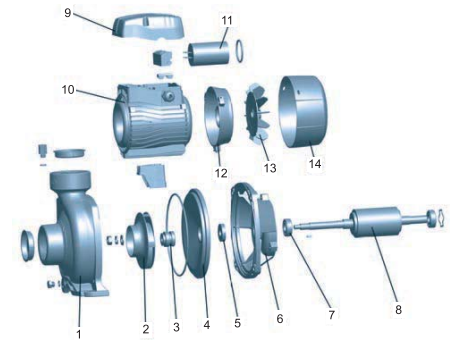
Model	DN1	DN2	L (mm)	W (mm)	H (mm)	L ₁ (mm)	L ₂ (mm)	W ₁ (mm)	H ₁ (mm)
ACm60B2	2"	2"	331	195	242	62,5	4	156	100
ACm75B2	2"	2"	331	195	242	62,5	4	156	100
ACm110B2	2"	2"	378	206	263	59	3,5	166	112
ACm150B2	2"	2"	378	206	263	59	3,5	166	112

Hydraulic Performance Curves



Materials Table

No.	Part	Material
1	Pump body	HT200
2	Impeller	AISI 304 Brass
3	Mechanical seal	Carbon/Ceramic
4	Support cover	HT200
5	Oil seal	
6	Support	ZL102
7	Bearing	
8	Rotor	
9	Terminal box	ABS
10	Stator	
11	Capacitor	
12	Rear cover	ZL102
13	Fan	PP
14	Fan cover	PP



Package Information

Model	GW (Kgs)	L (mm)	W (mm)	H (mm)	Quantity (PCS/20'TEU)
ACm60B2	14,4	375	214	265	1264
ACm75B2	15,2	375	214	265	1264
ACm110B2	19,9	415	225	285	945
ACm150B2	20,7	415	225	285	945

